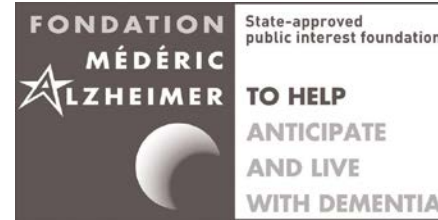


To help anticipate
Aider à anticiper



To help live with dementia
Aider à vivre avec la maladie

A NATIONAL CONSULTATION ABOUT SOCIAL RESEARCH AND INNOVATION

Léa Chaize
Network manager
Social Research and Innovation Department

Context



*A two days congress -
March 2017*

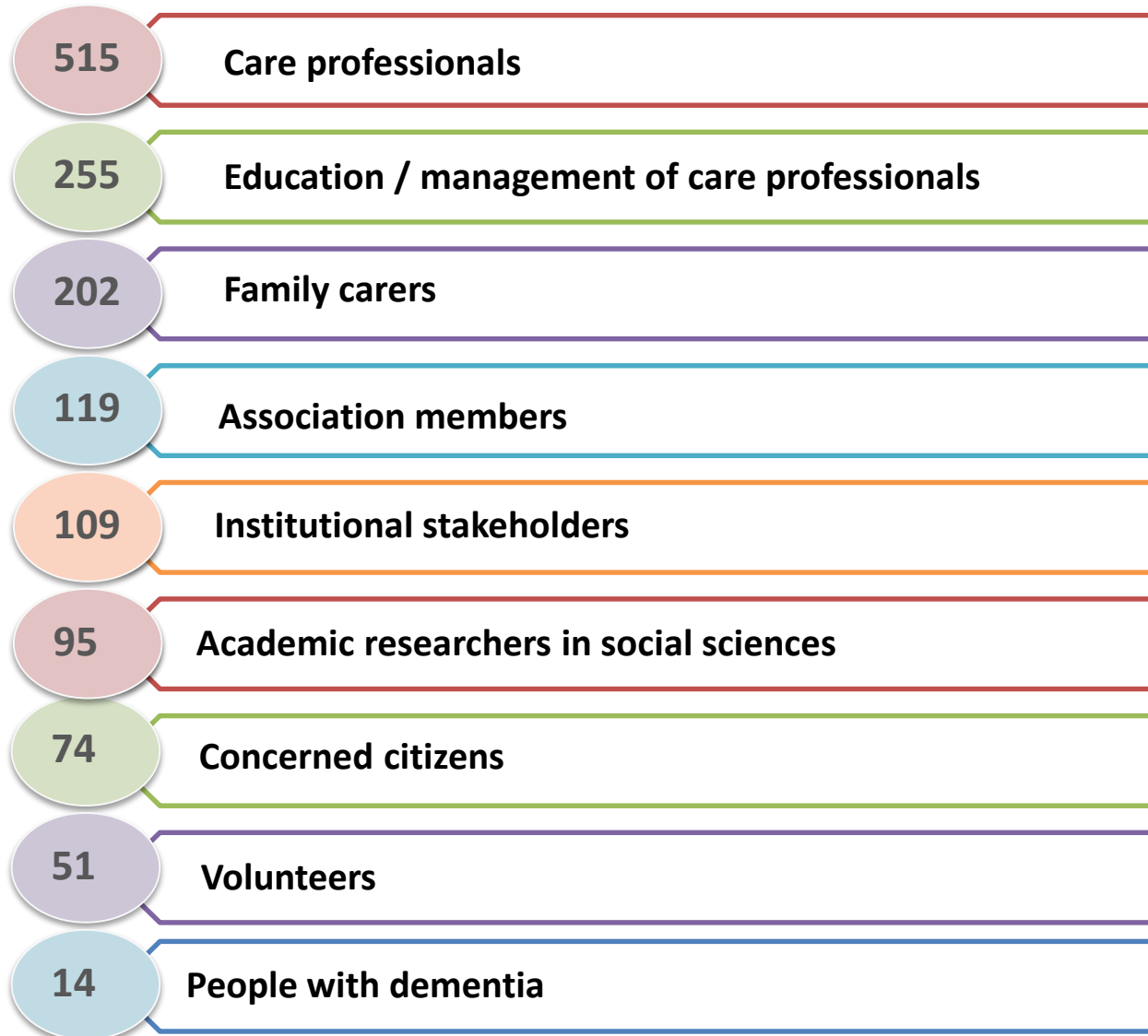


*A national consultation
January-February 2017*

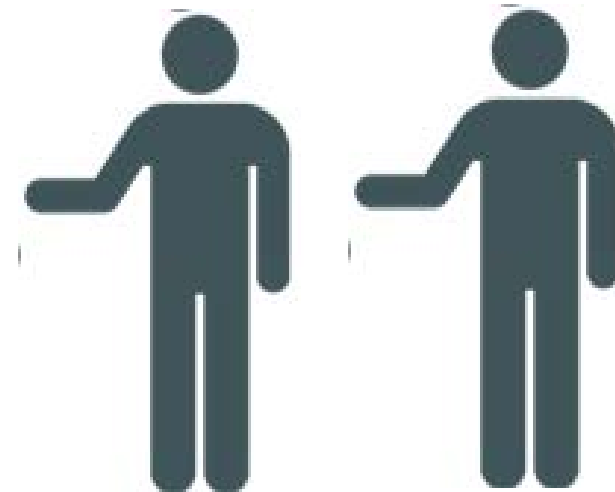
To identify research priorities that would optimise short and long term outcomes for people with dementia and their carers

1. Key priorities for social research and innovation
2. Challenges faced by :
 - researchers
 - health and social care professionals
 - care professionals and psycho social researchers
3. Shared findings

Who responded ?



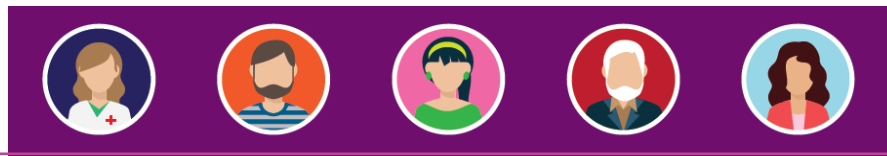
850
respondents



Key priorities for social research and innovation

It is essential that people with dementia and their carers benefit from :

- 1- Health care and treatments adapted to their needs
- 2- Evidence-based psycho social interventions
- 3- A friendly living environment
- 4- A society aware of their difficulties



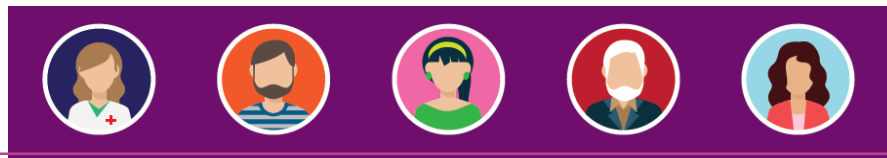
People with dementia and their carers should also benefit from :

5- Well-trained care professionals

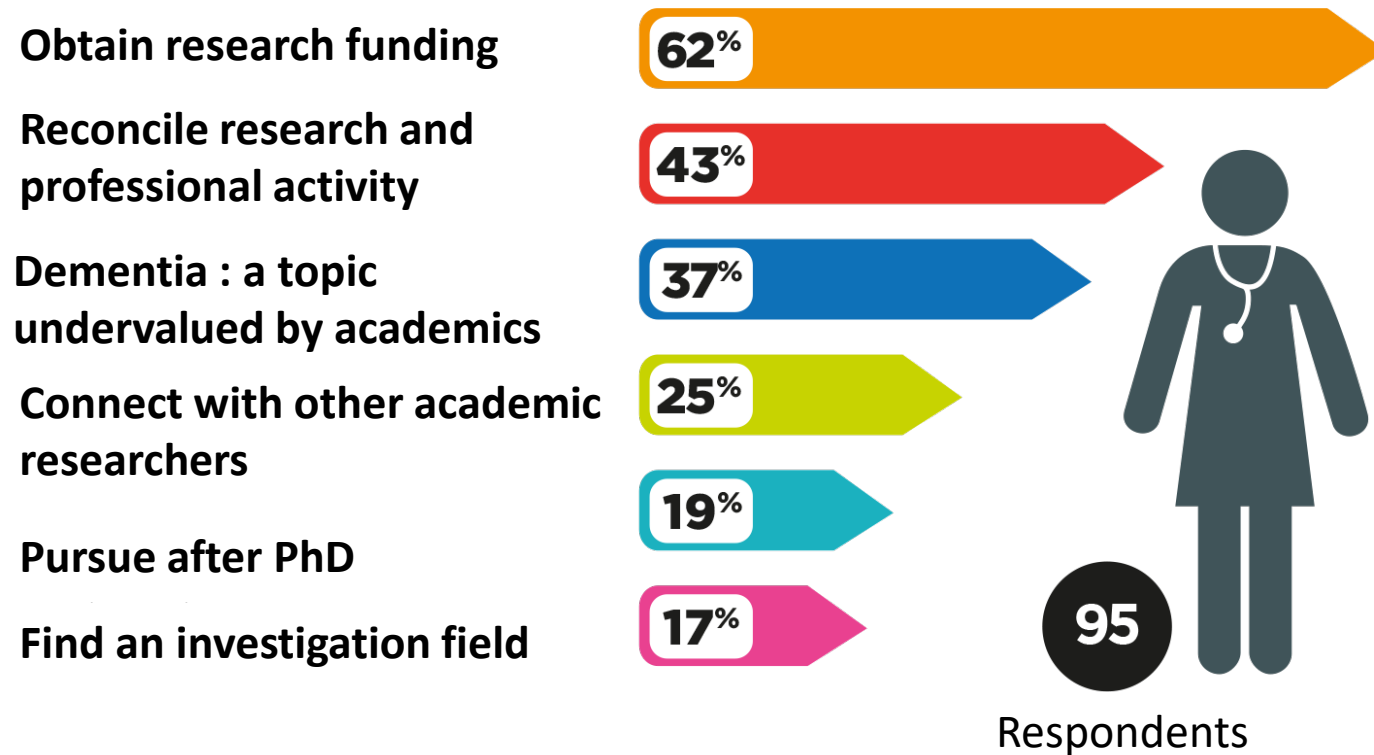
6- Services responding to their needs and expectations

7- Easy access to diagnosis and post diagnosis support

8- Have their rights and dignity respected



Challenges faced by researchers



Researchers in: anthropology, computer sciences, economy, educational sciences, epidemiology, geography, gerontology, language sciences, law, management sciences, neuropsychology, neuro sciences, occupational therapy, philosophy, psychiatry, psychology, public health, sociology, speech therapy etc.

**Are the solutions developed
by care professionals
studied enough by social sciences researchers ?**



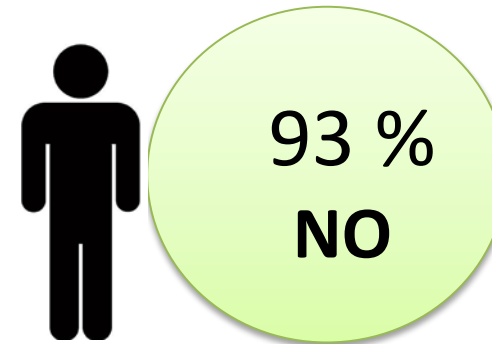
**83 %
NO**

Recommendations

- Increase the time spent by academics in care settings
- Involve care professionals in the design and implementation of field research and scientific events
- Develop new research subjects

Professionals such as : art-therapist, care assistant , ergonomist, geriatrician, health executive , judicial representative, lawyer neurologist, nurse notary, occupational therapist, public health physicians, physician, speech therapist, social worker, general practitioner, psycho-motor therapist, etc.

Are care professionals involved enough in academic research ?



Recommendations

- Reinforce partnerships between academic research and care organizations
- Value professionals' experiences and knowledge
- Train professionals in academic research
- Provide time and financial support so professionals can carry out researchs projects

Shared findings

➤ Difficulties to assess the impact of initiatives improving quality of care



76 %
Agreed

➤ Difficulties to spread evidence-based strategies



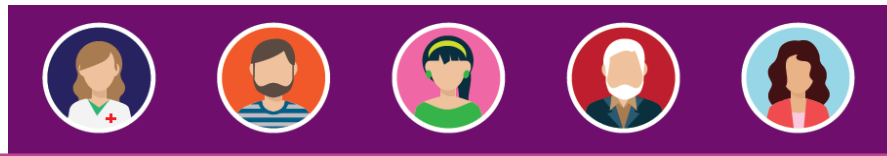
85 %
Agreed

Conclusion

Social research and innovation is essential
in order to improve the life of people with dementia

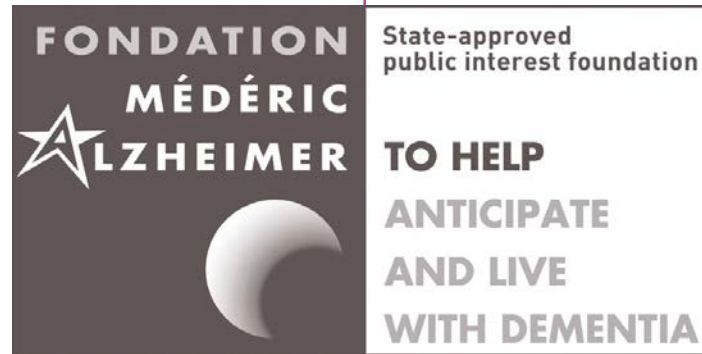
- *We need more relationships between care professionals and psycho social researchers*
- *We need to improve evaluation and dissemination of evidence-based research and field initiatives*

We need to work all together



Thank you

Merci



for your attention

Pour votre attention

Léa CHAIZE

chaize@med-alz.org

www.fondation-mederic-alzheimer.org