

# Organisational and personal determinants of the use of physical restraints in Luxembourg nursing homes

Wolfgang Billen & Dieter Ferring  
University of Luxembourg, Luxembourg

# The study

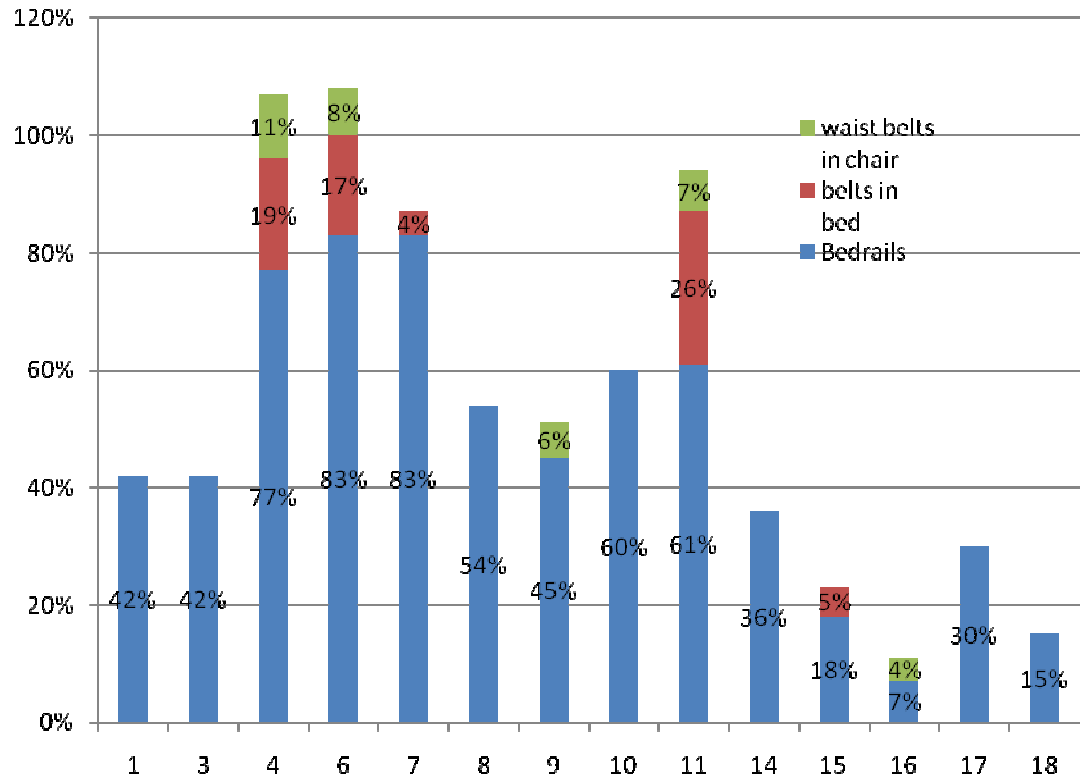
- In this study in November 2009 ten nursing homes in Luxembourg were involved.
- A questionnaire was distributed to 886 nursing staff workers and to 35 members of the management (senior nurses) of nursing home wards.
- 27,1 % of the nursing staff workers and 51,4% of the senior nurses answered to the questionnaires.
- This result shows the importance of the subject for professional care givers.

# The specific situation in Luxembourg

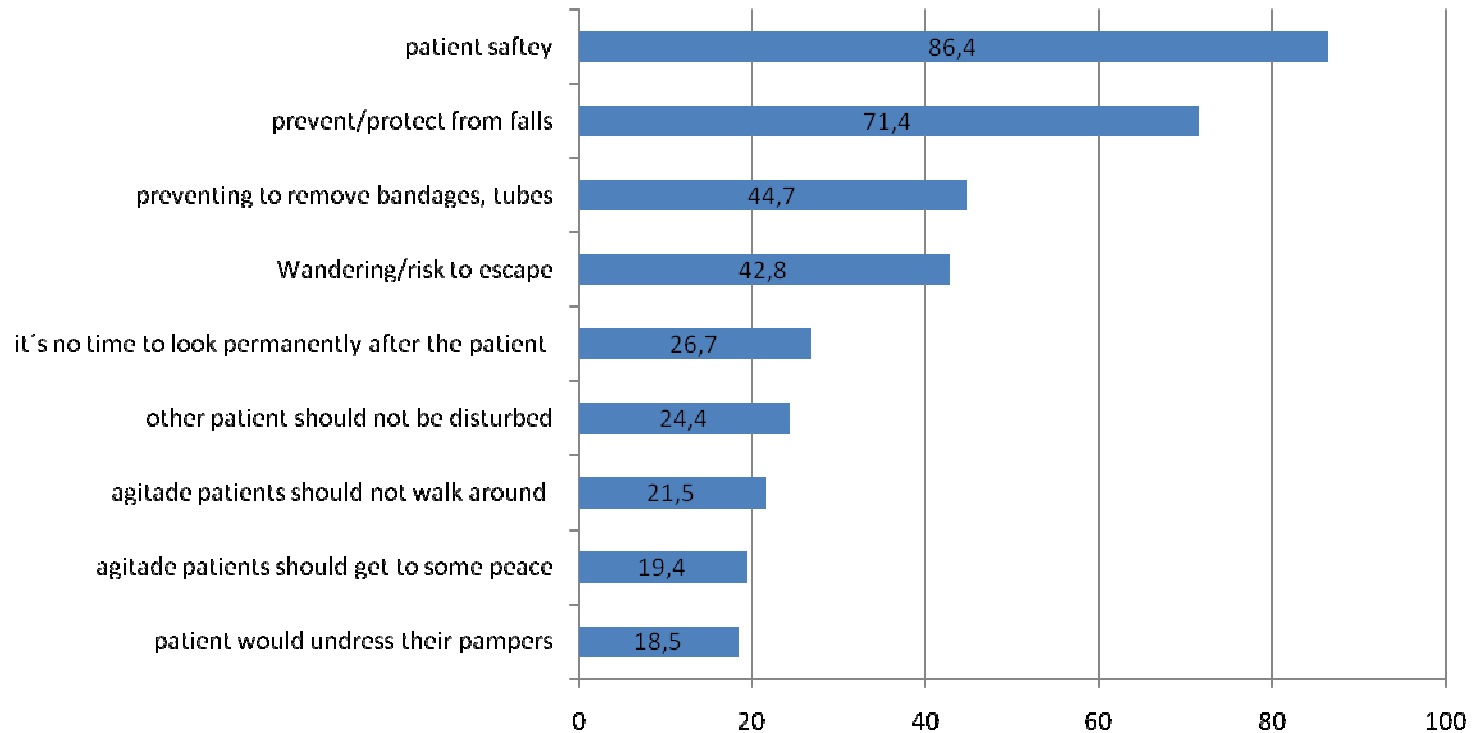
- the ratio between FTE (full time employee) an patient is nearly 1:1
- about each 1/3 of the care givers comes from Luxembourg, Germany and France (some more from Belgium or Portugal)
- different qualifications with different trainings
  - infirmier= nurse
  - Aide-Soignante= nursing assistant
  - Aide Socio-familiale = care helper
- Restraints can be used in an area not regulated by law or rules

# Prevalence of physical restraints in different wards

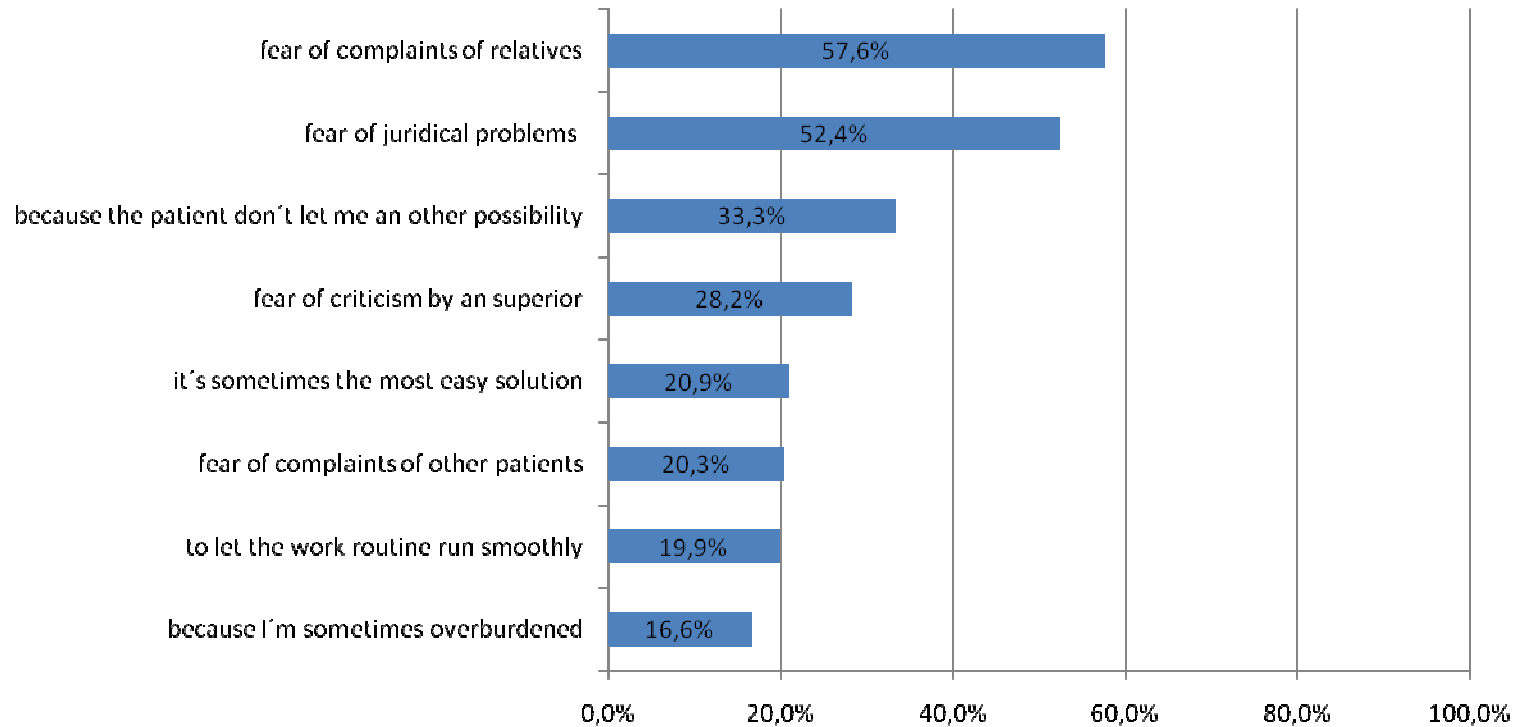
- Totaly Luxembourg has a rate of 53,5% for physical restraints
- There are big differences between the wards



# Explicit reasons for the use of physical restraints

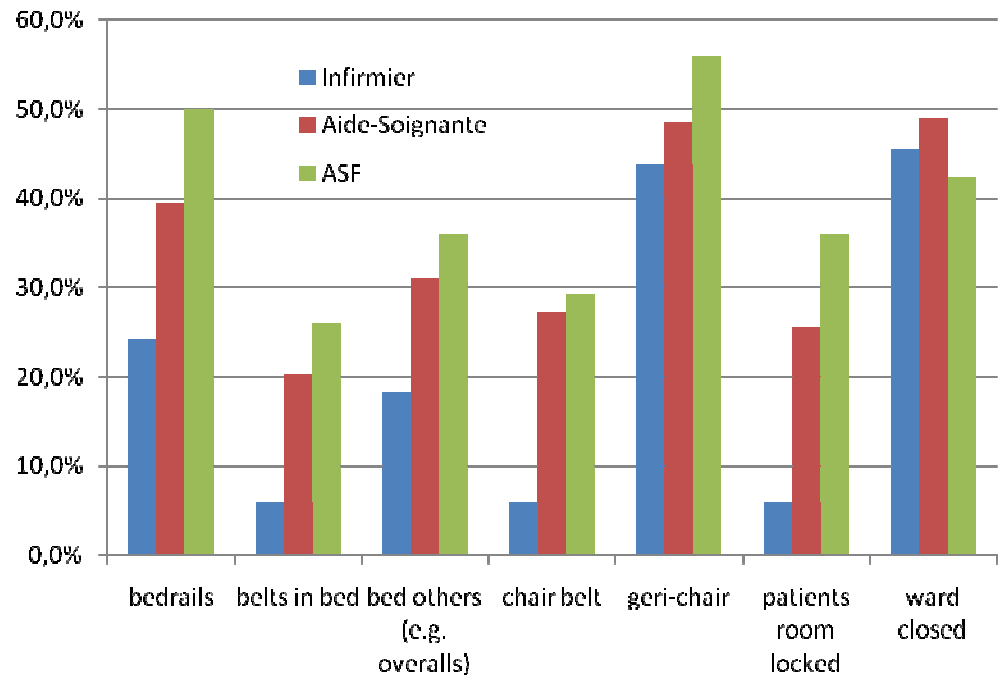


# Implicit reasons for the use of physical restraints



# Valuation of physical restraints and qualification of the staff members

For a marked number of staff members some measures are not valued as a physical restraint (even to fasten someone with a belt or the locking of the rooms door).

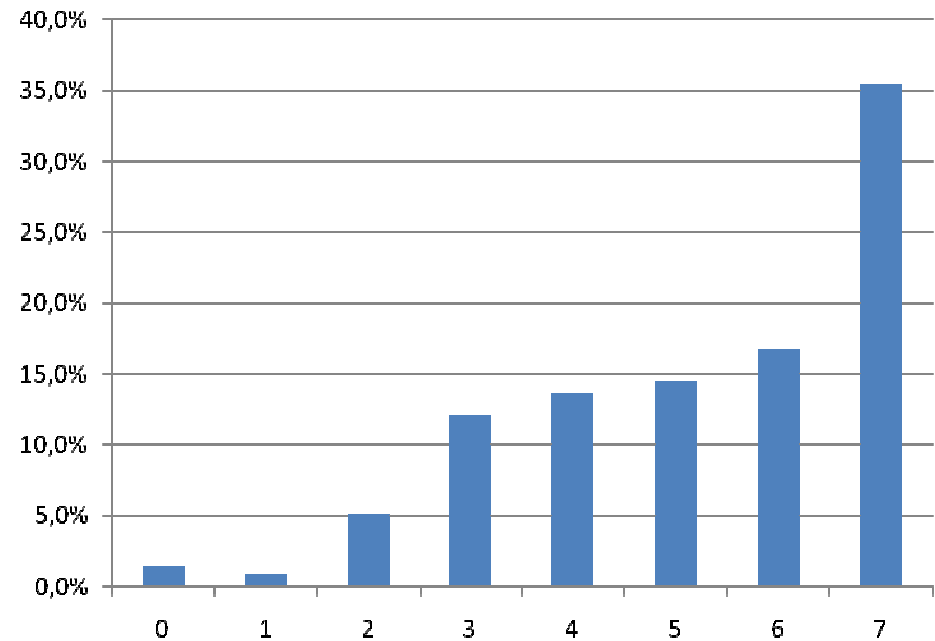


# Psychological burden for the staff members

It is significant, that

- the most young group
- and the group with less qualification

have less problems like the older and more qualified group of staff members.

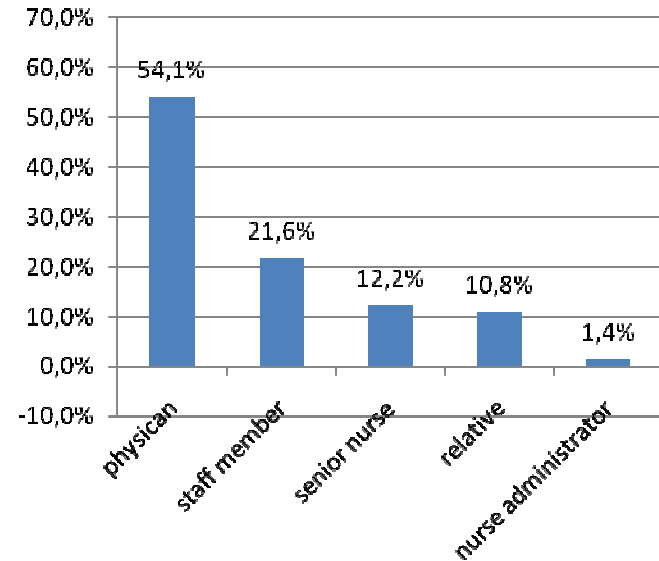
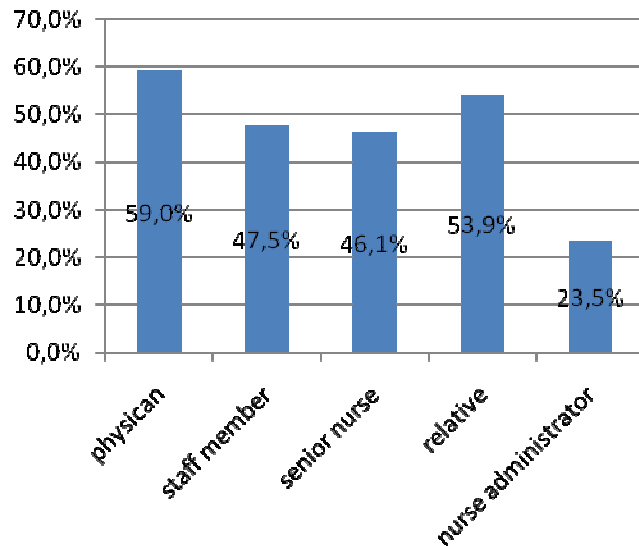


0= no problem

7= great burden

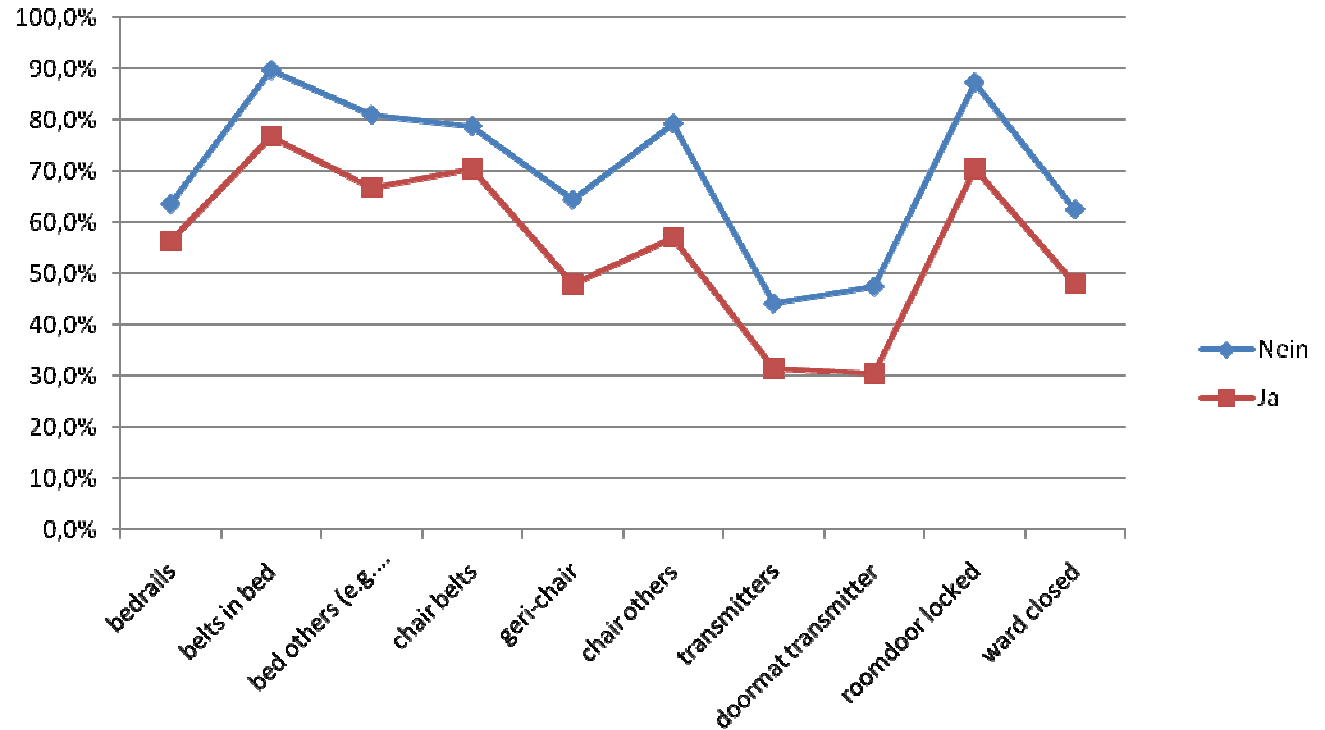


# Initiative for the use of physical restraints



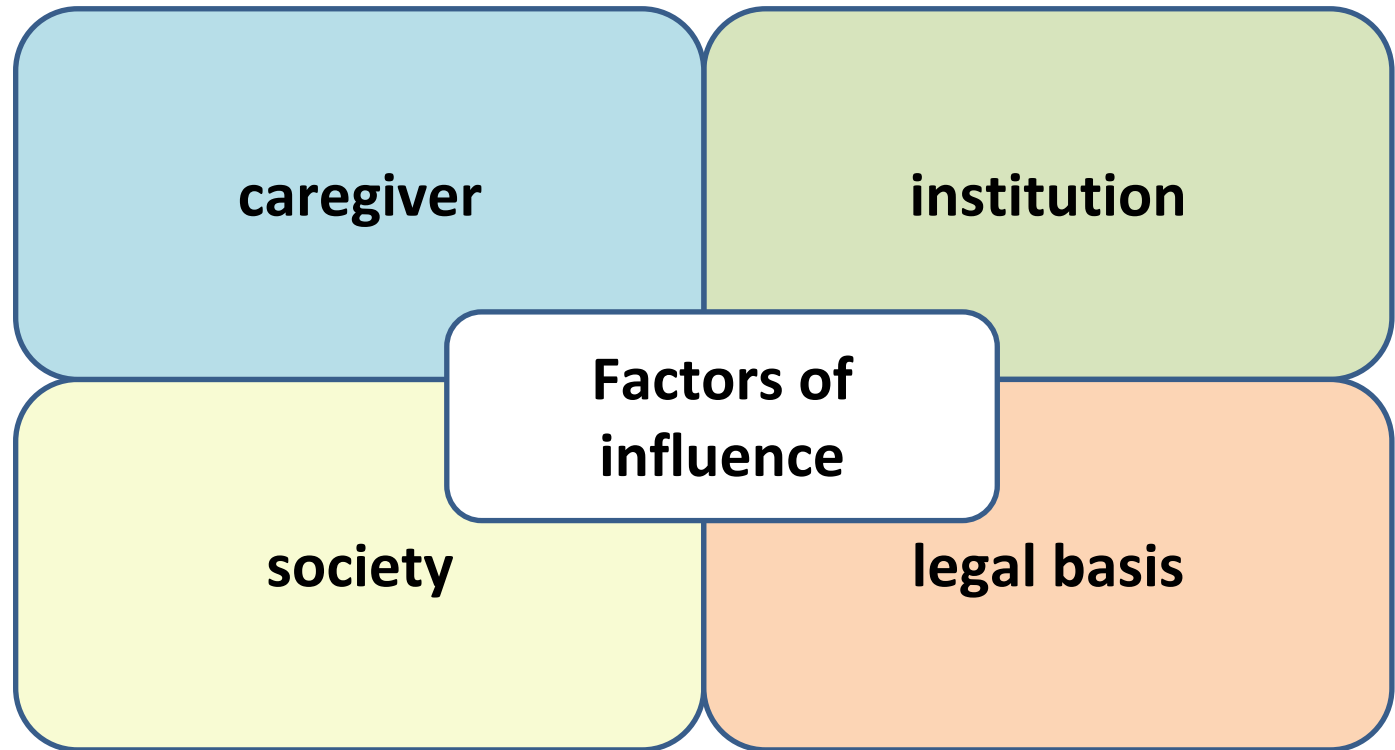
- The staff members questioned had the choice to mark in a list
- Those who only choices one answer, preferred the physician

# The influence of rules to the valuation of physical restraints



The staff members working in wards without rules to the use of physical restraints (blue line), judge the used measures more often as a physical restraint, than in wards using rules.

# Conclusions



# Thank you very much

Some more informations about this study can be found in the new publication to the topic.

Orders by:

[www.rbs.lu](http://www.rbs.lu)

Further informations:

[wolfgangbillen@web.de](mailto:wolfgangbillen@web.de)

